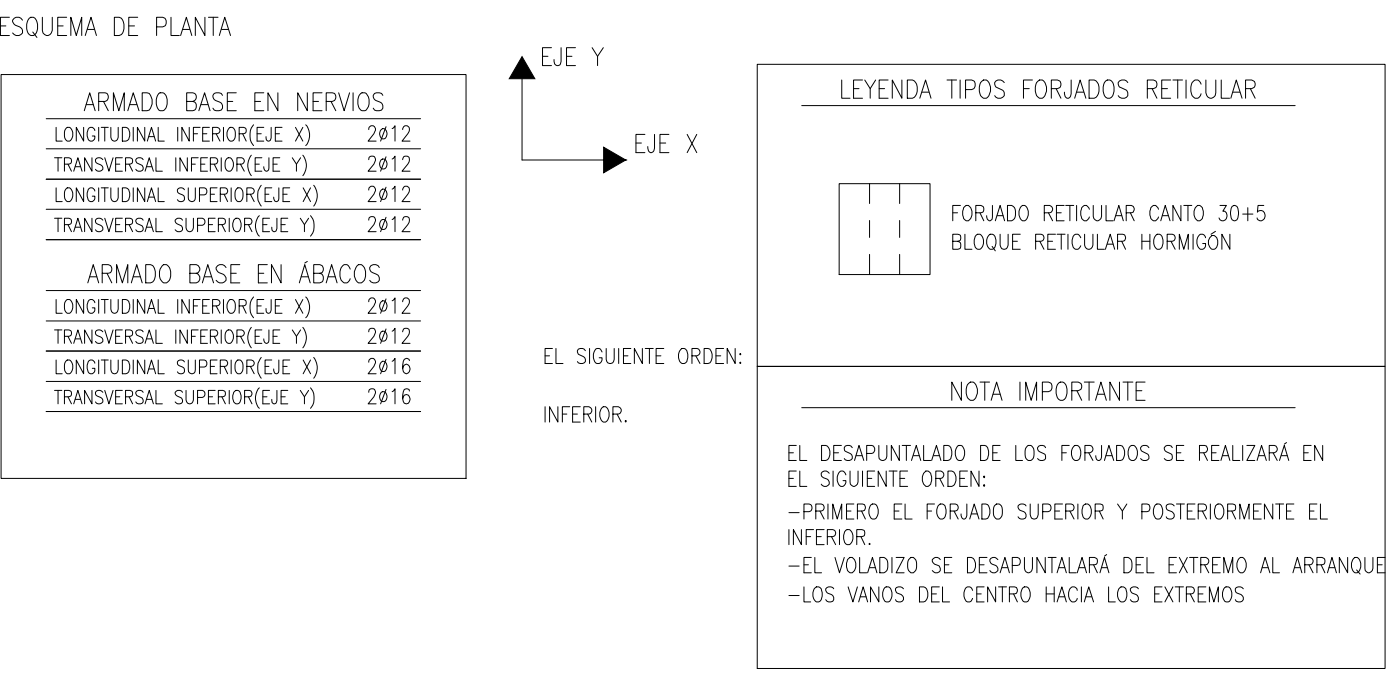
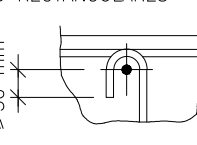
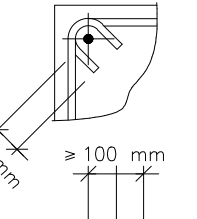
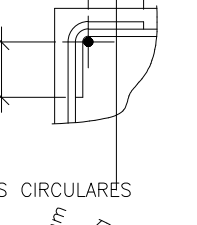
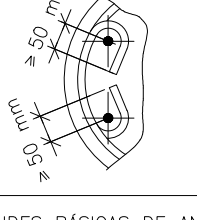
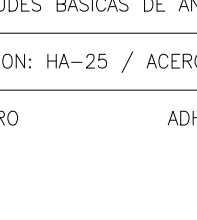
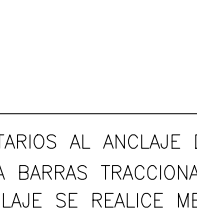
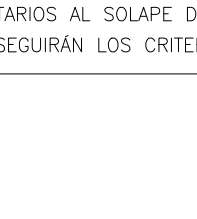



CUADRO DE CARACTERÍSTICAS. Datos de Materiales					
MATERIALES	HORMIGÓN		ACERO		Tipo
	Nivel Control	Coef. Ponder	Nivel Control	Coef. Ponder	
CIMENTACIÓN	NORMAL	$\gamma_c=1.50$	HA-30/B/25/XC2	NORMAL	$\gamma_s=1.15$ B-500S
MUROS	NORMAL	$\gamma_c=1.50$	HA-30/B/25/XC1	NORMAL	$\gamma_s=1.15$ B-500S
PILAES	NORMAL	$\gamma_c=1.50$	HA-30/B/25/XC1	NORMAL	$\gamma_s=1.15$ B-500S
FORJADOS Y VIGAS	NORMAL	$\gamma_c=1.50$	HA-30/B/16/XC1	NORMAL	$\gamma_s=1.15$ B-500S
ELEM. EXTERIORES	NORMAL	$\gamma_c=1.50$	HA-30/B/16/XC2	NORMAL	$\gamma_s=1.15$ B-500S
EJECUCIÓN	NORMAL	$\gamma_c=1.35$ (CONCRETA)	HA-30/B/16/XC2	ADAPTADO A LA CE-21	

CUADRO DE CARACTERÍSTICAS. Durabilidad/Recubrimiento Mínimo			
DURABILIDAD. ART. 43 CÓDIGO ESTRUCTURAL			
DATOS GENERALES			
Clase General de Exposición:		No Agresiva	
Clase Específica de Exposición:		No Hay	
Tipo de Ambiente:		Ambiente XC1	
Máximo Relación Agua/Cemento (a/c):		0.60	
Mínimo Contenido de Cemento (kg/m³):		275	
RECURBIMIENTOS DE ARMADURAS			
Recubrimiento Mínimo (Tabla 37.2.4)(mm):		HORMIGONES VISTOS	
Máximo Recubrimiento (mm):		resin	30 mm
Recubrimiento Nominal (mm):		resin-resin+ay	10 mm
			30 mm
			40 mm



CUADRO DE CARACTERÍSTICAS. Disposición Armados	
CIERRE ESTRIBOS EN PILARES	
SEPARACIONES ENTRE BARRAS Y CIERRE DE ESTRIBOS	
PILARES RECTANGULARES	
 <p>Diagram showing the lap joint for rectangular columns. The lap length is indicated as $\geq 50 \text{ mm}$. The lap is centered over the reinforcement bars.</p>	
 <p>Diagram showing the lap joint for rectangular columns with dimensions. The lap length is $\geq 50 \text{ mm}$. The lap is centered over the reinforcement bars. The distance from the lap to the edge is $\geq 100 \text{ mm}$.</p>	
 <p>Diagram showing the lap joint for rectangular columns with dimensions. The lap length is $\geq 50 \text{ mm}$. The lap is centered over the reinforcement bars. The distance from the lap to the edge is $\geq 100 \text{ mm}$.</p>	
PILARES CIRCULARES	
 <p>Diagram showing the lap joint for circular columns. The lap length is $\geq 50 \text{ mm}$. The lap is centered over the reinforcement bars. The distance from the lap to the edge is $\geq 100 \text{ mm}$.</p>	
 <p>Diagram showing the lap joint for circular columns with dimensions. The lap length is $\geq 50 \text{ mm}$. The lap is centered over the reinforcement bars. The distance from the lap to the edge is $\geq 100 \text{ mm}$.</p>	
LONGITUDES BÁSICAS DE ANCLAJE (ART. 49.5 CE-21)	
HORMIGÓN: HA-25 / ACERO: B-500S / CON ACCIONES DINÁMICAS	
 <p>Diagram showing the lap joint for circular columns with dimensions. The lap length is $\geq 50 \text{ mm}$. The lap is centered over the reinforcement bars. The distance from the lap to the edge is $\geq 100 \text{ mm}$.</p>	
 <p>Diagram showing the lap joint for circular columns with dimensions. The lap length is $\geq 50 \text{ mm}$. The lap is centered over the reinforcement bars. The distance from the lap to the edge is $\geq 100 \text{ mm}$.</p>	
LONGITUDES BÁSICAS DE ANCLAJE (ART. 49.5 CE-21)	
HORMIGÓN: HA-25 / ACERO: B-500S / CON ACCIONES DINÁMICAS	
 <p>Diagram showing the lap joint for circular columns with dimensions. The lap length is $\geq 50 \text{ mm}$. The lap is centered over the reinforcement bars. The distance from the lap to the edge is $\geq 100 \text{ mm}$.</p>	
<p>Diagram showing the lap joint for circular columns with dimensions. The lap length is $\geq 50 \text{ mm}$. The lap is centered over the reinforcement bars. The distance from the lap to the edge is $\geq 100 \text{ mm}$.</p>	
LONGITUDES BÁSICAS DE ANCLAJE (ART. 49.5 CE-21)	
HORMIGÓN: HA-25 / ACERO: B-500S / CON ACCIONES DINÁMICAS	
<p>Diagram showing the lap joint for circular columns with dimensions. The lap length is $\geq 50 \text{ mm}$. The lap is centered over the reinforcement bars. The distance from the lap to the edge is $\geq 100 \text{ mm}$.</p>	
<p>Diagram showing the lap joint for circular columns with dimensions. The lap length is $\geq 50 \text{ mm}$. The lap is centered over the reinforcement bars. The distance from the lap to the edge is $\geq 100 \text{ mm}$.</p>	
LONGITUDES BÁSICAS DE ANCLAJE (ART. 49.5 CE-21)	
HORMIGÓN: HA-25 / ACERO: B-500S / CON ACCIONES DINÁMICAS	
<p>Diagram showing the lap joint for circular columns with dimensions. The lap length is $\geq 50 \text{ mm}$. The lap is centered over the reinforcement bars. The distance from the lap to the edge is $\geq 100 \text{ mm}$.</p>	
<p>Diagram showing the lap joint for circular columns with dimensions. The lap length is $\geq 50 \text{ mm}$. The lap is centered over the reinforcement bars. The distance from the lap to the edge is $\geq 100 \text{ mm}$.</p>	
LONGITUDES BÁSICAS DE ANCLAJE (ART. 49.5 CE-21)	
HORMIGÓN: HA-25 / ACERO: B-500S / CON ACCIONES DINÁMICAS	
<p>Diagram showing the lap joint for circular columns with dimensions. The lap length is $\geq 50 \text{ mm}$. The lap is centered over the reinforcement bars. The distance from the lap to the edge is $\geq 100 \text{ mm}$.</p>	
<p>Diagram showing the lap joint for circular columns with dimensions. The lap length is $\geq 50 \text{ mm}$. The lap is centered over the reinforcement bars. The distance from the lap to the edge is $\geq 100 \text{ mm}$.</p>	
LONGITUDES BÁSICAS DE ANCLAJE (ART. 49.5 CE-21)	
HORMIGÓN: HA-25 / ACERO: B-500S / CON ACCIONES DINÁMICAS	
<p>Diagram showing the lap joint for circular columns with dimensions. The lap length is $\geq 50 \text{ mm}$. The lap is centered over the reinforcement bars. The distance from the lap to the edge is $\geq 100 \text{ mm}$.</p>	
<p>Diagram showing the lap joint for circular columns with dimensions. The lap length is $\geq 50 \text{ mm}$. The lap is centered over the reinforcement bars. The distance from the lap to the edge is $\geq 100 \text{ mm}$.</p>	
LONGITUDES BÁSICAS DE ANCLAJE (ART. 49.5 CE-21)	
HORMIGÓN: HA-25 / ACERO: B-500S / CON ACCIONES DINÁMICAS	
<p>Diagram showing the lap joint for circular columns with dimensions. The lap length is $\geq 50 \text{ mm}$. The lap is centered over the reinforcement bars. The distance from the lap to the edge is $\geq 100 \text{ mm}$.</p>	
<p>Diagram showing the lap joint for circular columns with dimensions. The lap length is $\geq 50 \text{ mm}$. The lap is centered over the reinforcement bars. The distance from the lap to the edge is $\geq 100 \text{ mm}$.</p>	
LONGITUDES BÁSICAS DE ANCLAJE (ART. 49.5 CE-21)	
HORMIGÓN: HA-25 / ACERO: B-500S / CON ACCIONES DINÁMICAS	
<p>Diagram showing the lap joint for circular columns with dimensions. The lap length is $\geq 50 \text{ mm}$. The lap is centered over the reinforcement bars. The distance from the lap to the edge is $\geq 100 \text{ mm}$.</p>	
<p>Diagram showing the lap joint for circular columns with dimensions. The lap length is $\geq 50 \text{ mm}$. The lap is centered over the reinforcement bars. The distance from the lap to the edge is $\geq 100 \text{ mm}$.</p>	
LONGITUDES BÁSICAS DE ANCLAJE (ART. 49.5 CE-21)	
HORMIGÓN: HA-25 / ACERO: B-500S / CON ACCIONES DINÁMICAS	
<p>Diagram showing the lap joint for circular columns with dimensions. The lap length is $\geq 50 \text{ mm}$. The lap is centered over the reinforcement bars. The distance from the lap to the edge is $\geq 100 \text{ mm}$.</p>	
<p>Diagram showing the lap joint for circular columns with dimensions. The lap length is $\geq 50 \text{ mm}$. The lap is centered over the reinforcement bars. The distance from the lap to the edge is $\geq 100 \text{ mm}$.</p>	
LONGITUDES BÁSICAS DE ANCLAJE (ART. 49.5 CE-21)	
HORMIGÓN: HA-25 / ACERO: B-500S / CON ACCIONES DINÁMICAS	
<p>Diagram showing the lap joint for circular columns with dimensions. The lap length is $\geq 50 \text{ mm}$. The lap is centered over the reinforcement bars. The distance from the lap to the edge is $\geq 100 \text{ mm}$.</p>	
<p>Diagram showing the lap joint for circular columns with dimensions. The lap length is $\geq 50 \text{ mm}$. The lap is centered over the reinforcement bars. The distance from the lap to the edge is $\geq 100 \text{ mm}$.</p>	
LONGITUDES BÁSICAS DE ANCLAJE (ART. 49.5 CE-21)	
HORMIGÓN: HA-25 / ACERO: B-500S / CON ACCIONES DINÁMICAS	
<p>Diagram showing the lap joint for circular columns with dimensions. The lap length is $\geq 50 \text{ mm}$. The lap is centered over the reinforcement bars. The distance from the lap to the edge is $\geq 100 \text{ mm}$.</p>	
<p>Diagram showing the lap joint for circular columns with dimensions. The lap length is $\geq 50 \text{ mm}$. The lap is centered over the reinforcement bars. The distance from the lap to the edge is $\geq 100 \text{ mm}$.</p>	
LONGITUDES BÁSICAS DE ANCLAJE (ART. 49.5 CE-21)	
HORMIGÓN: HA-25 / ACERO: B-500S / CON ACCIONES DINÁMICAS	
<p>Diagram showing the lap joint for circular columns with dimensions. The lap length is $\geq 50 \text{ mm}$. The lap is centered over the reinforcement bars. The distance from the lap to the edge is $\geq 100 \text{ mm}$.</p>	
<p>Diagram showing the lap joint for circular columns with dimensions. The lap length is $\geq 50 \text{ mm}$. The lap is centered over the reinforcement bars. The distance from the lap to the edge is $\geq 100 \text{ mm}$.</p>	
LONGITUDES BÁSICAS DE ANCLAJE (ART. 49.5 CE-21)	
HORMIGÓN: HA-25 / ACERO: B-500S / CON ACCIONES DINÁMICAS	
<p>Diagram showing the lap joint for circular columns with dimensions. The lap length is $\geq 50 \text{ mm}$. The lap is centered over the reinforcement bars. The distance from the lap to the edge is $\geq 100 \text{ mm}$.</p>	
<p>Diagram showing the lap joint for circular columns with dimensions. The lap length is $\geq 50 \text{ mm}$. The lap is centered over the reinforcement bars. The distance from the lap to the edge is $\geq 100 \text{ mm}$.</p>	
LONGITUDES BÁSICAS DE ANCLAJE (ART. 49.5 CE-21)	
HORMIGÓN: HA-25 / ACERO: B-500S / CON ACCIONES DINÁMICAS	
<p>Diagram showing the lap joint for circular columns with dimensions. The lap length is $\geq 50 \text{ mm}$. The lap is centered over the reinforcement bars. The distance from the lap to the edge is $\geq 100 \text{ mm}$.</p>	
<p>Diagram showing the lap joint for circular columns with dimensions. The lap length is $\geq 50 \text{ mm}$. The lap is centered over the reinforcement bars. The distance from the lap to the edge is $\geq 100 \text{ mm}$.</p>	
LONGITUDES BÁSICAS DE ANCLAJE (ART. 49.5 CE-21)	
HORMIGÓN: HA-25 / ACERO: B-500S / CON ACCIONES DINÁMICAS	
<p>Diagram showing the lap joint for circular columns with dimensions. The lap length is $\geq 50 \text{ mm}$. The lap is centered over the reinforcement bars. The distance from the lap to the edge is $\geq 100 \text{ mm}$.</p>	
<p>Diagram showing the lap joint for circular columns with dimensions. The lap length is $\geq 50 \text{ mm}$. The lap is centered over the reinforcement bars. The distance from the lap to the edge is $\geq 100 \text{ mm}$.</p>	
LONGITUDES BÁSICAS DE ANCLAJE (ART. 49.5 CE-21)	
HORMIGÓN: HA-25 / ACERO: B-500S / CON ACCIONES DINÁMICAS	
<p>Diagram showing the lap joint for circular columns with dimensions. The lap length is $\geq 50 \text{ mm}$. The lap is centered over the reinforcement bars. The distance from the lap to the edge is $\geq 100 \text{ mm}$.</p>	
<p>Diagram showing the lap joint for circular columns with dimensions. The lap length is $\geq 50 \text{ mm}$. The lap is centered over the reinforcement bars. The distance from the lap to the edge is $\geq 100 \text{ mm}$.</p>	
LONGITUDES BÁSICAS DE ANCLAJE (ART. 49.5 CE-21)	
HORMIGÓN: HA-25 / ACERO: B-500S / CON ACCIONES DINÁMICAS	
<p>Diagram showing the lap joint for circular columns with dimensions. The lap length is $\geq 50 \text{ mm}$. The lap is centered over the reinforcement bars. The distance from the lap to the edge is $\geq 100 \text{ mm}$.</p>	
<p>Diagram showing the lap joint for circular columns with dimensions. The lap length is $\geq 50 \text{ mm}$. The lap is centered over the reinforcement bars. The distance from the lap to the edge is $\geq 100 \text{ mm}$.</p>	
LONGITUDES BÁSICAS DE ANCLAJE (ART. 49.5 CE-21)	
HORMIGÓN: HA-25 / ACERO: B-500S / CON ACCIONES DINÁMICAS	
<p>Diagram showing the lap joint for circular columns with dimensions. The lap length is $\geq 50 \text{ mm}$. The lap is centered over the reinforcement bars. The distance from the lap to the edge is $\geq 100 \text{ mm}$.</p>	
<p>Diagram showing the lap joint for circular columns with dimensions. The lap length is $\geq 50 \text{ mm}$. The lap is centered over the reinforcement bars. The distance from the lap to the edge is $\geq 100 \text{ mm}$.</p>	
LONGITUDES BÁSICAS DE ANCLAJE (ART. 49.5 CE-21)	
HORMIGÓN: HA-25 / ACERO: B-500S / CON ACCIONES DINÁMICAS	
<p>Diagram showing the lap joint for circular columns with dimensions. The lap length is $\geq 50 \text{ mm}$. The lap is centered over the reinforcement bars. The distance from the lap to the edge is $\geq 100 \text{ mm}$.</p>	
<p>Diagram showing the lap joint for circular columns with dimensions. The lap length is $\geq 50 \text{ mm}$. The lap is centered over the reinforcement bars. The distance from the lap to the edge is $\geq 100 \text{ mm}$.</p>	
LONGITUDES BÁSICAS DE ANCLAJE (ART. 49.5 CE-21)	
HORMIGÓN: HA-25 / ACERO: B-500S / CON ACCIONES DINÁMICAS	
<p>Diagram showing the lap joint for circular columns with dimensions. The lap length is $\geq 50 \text{ mm}$. The lap is centered over the reinforcement bars. The distance from the lap to the edge is $\geq 100 \text{ mm}$.</p>	
<p>Diagram showing the lap joint for circular columns with dimensions. The lap length is $\geq 50 \text{ mm}$. The lap is centered over the reinforcement bars. The distance from the lap to the edge is $\geq 100 \text{ mm}$.</p>	
LONGITUDES BÁSICAS DE ANCLAJE (ART. 49.5 CE-21)	
HORMIGÓN: HA-25 / ACERO: B-500S / CON ACCIONES DINÁMICAS	
<p>Diagram showing the lap joint for circular columns with dimensions. The lap length is $\geq 50 \text{ mm}$. The lap is centered over the reinforcement bars. The distance from the lap to the edge is $\geq 100 \text{ mm}$.</p>	
<p>Diagram showing the lap joint for circular columns with dimensions. The lap length is $\geq 50 \text{ mm}$. The lap is centered over the reinforcement bars. The distance from the lap to the edge is $\geq 100 \text{ mm}$.</p>	
LONGITUDES BÁSICAS DE ANCLAJE (ART. 49.5 CE-21)	
HORMIGÓN: HA-25 / ACERO: B-500S / CON ACCIONES DINÁMICAS	
<p>Diagram showing the lap joint for circular columns with dimensions. The lap length is $\geq 50 \text{ mm}$. The lap is centered over the reinforcement bars. The distance from the lap to the edge is $\geq 100 \text{ mm}$.</p>	
<p>Diagram showing the lap joint for circular columns with dimensions. The lap length is $\geq 50 \text{ mm}$. The lap is centered over the reinforcement bars. The distance from the lap to the edge is $\geq 100 \text{ mm}$.</p>	
LONGITUDES BÁSICAS DE ANCLAJE (ART. 49.5 CE-21)	
HORMIGÓN: HA-25 / ACERO: B-500S / CON ACCIONES DINÁMICAS	
<p>Diagram showing the lap joint for circular columns with dimensions. The lap length is $\geq 50 \text{ mm}$. The lap is centered over the reinforcement bars. The distance from the lap to the edge is $\geq 100 \text{ mm}$.</p>	
<p>Diagram showing the lap joint for circular columns with dimensions. The lap length is $\geq 50 \text{ mm}$. The lap is centered over the reinforcement bars. The distance from the lap to the edge is $\geq 100 \text{ mm}$.</p>	
LONGITUDES BÁSICAS DE ANCLAJE (ART. 49.5 CE-21)	
HORMIGÓN: HA-25 / ACERO: B-500S / CON ACCIONES DINÁMICAS	
<p>Diagram showing the lap joint for circular columns with dimensions. The lap length is $\geq 50 \text{ mm}$. The lap is centered over the reinforcement bars. The distance from the lap to the edge is $\geq 100 \text{ mm}$.</p>	
<p>Diagram showing the lap joint for circular columns with dimensions. The lap length is $\geq 50 \text{ mm}$. The lap is centered over the reinforcement bars. The distance from the lap to the edge is $\geq 100 \text{ mm}$.</p>	
LONGITUDES BÁSICAS DE ANCLAJE (ART. 49.5 CE-21)	
HORMIGÓN: HA-25 / ACERO: B-500S / CON ACCIONES DINÁMICAS	
<p>Diagram showing the lap joint for circular columns with dimensions. The lap length is $\geq 50 \text{ mm}$. The lap is centered over the reinforcement bars. The distance from the lap to the edge is $\geq 100 \text{ mm}$.</p>	
<p>Diagram showing the lap joint for circular columns with dimensions. The lap length is $\geq 50 \text{ mm}$. The lap is centered over the reinforcement bars. The distance from the lap to the edge is $\geq 100 \text{ mm}$.</p>	
LONGITUDES BÁSICAS DE ANCLAJE (ART. 49.5 CE-21)	
HORMIGÓN: HA-25 / ACERO: B-500S / CON ACCIONES DINÁMICAS	
<p>Diagram showing the lap joint for circular columns with dimensions. The lap length is $\geq 50 \text{ mm}$. The lap is centered over the reinforcement bars. The distance from the lap to the edge is $\geq 100 \text{ mm}$.</p>	
<p>Diagram showing the lap joint for circular columns with dimensions. The lap length is $\geq 50 \text{ mm}$. The lap is centered over the reinforcement bars. The distance from the lap to the edge is $\geq 100 \text{ mm}$.</p>	
LONGITUDES BÁSICAS DE ANCLAJE (ART. 49.5 CE-21)	
HORMIGÓN: HA-25 / ACERO: B-500S / CON ACCIONES DINÁMICAS	
<p>Diagram showing the lap joint for circular columns with dimensions. The lap length is $\geq 50 \text{ mm}$. The lap is centered over the reinforcement bars. The distance from the lap to the edge is $\geq 100 \text{ mm}$.</p>	
<p>Diagram showing the lap joint for circular columns with dimensions. The lap length is $\geq 50 \text{ mm}$. The lap is centered over the reinforcement bars. The distance from the lap to the edge is $\geq 100 \text{ mm}$.</p>	
LONGITUDES BÁSICAS DE ANCLAJE (ART. 49.5 CE-21)	
HORMIGÓN: HA-25 / ACERO: B-500S / CON ACCIONES DINÁMICAS	
<p>Diagram showing the lap joint for circular columns with dimensions. The lap length is $\geq 50 \text{ mm}$. The lap is centered over the reinforcement bars. The distance from the lap to the edge is $\geq 100 \text{ mm}$.</p>	
<p>Diagram showing the lap joint for circular columns with dimensions. The lap length is $\geq 50 \text{ mm}$. The lap is centered over the reinforcement bars. The distance from the lap to the edge is $\geq 100 \text{ mm}$.</p>	
LONGITUDES BÁSICAS DE ANCLAJE (ART. 49.5 CE-21)	
HORMIGÓN: HA-25 / ACERO: B-500S / CON ACCIONES DINÁMICAS	
<p>Diagram showing the lap joint for circular columns with dimensions. The lap length is $\geq 50 \text{ mm}$. The lap is centered over the reinforcement bars. The distance from the lap to the edge is $\geq 100 \text{ mm}$.</p>	
<p>Diagram showing the lap joint for circular columns with dimensions. The lap length is $\geq 50 \text{ mm}$. The lap is centered over the reinforcement bars. The distance from the lap to the edge is $\geq 100 \text{ mm}$.</p>	
LONGITUDES BÁSICAS DE ANCLAJE (ART. 49.5 CE-21)	
HORMIGÓN: HA-25 / ACERO: B-500S / CON ACCIONES DINÁMICAS	
<p>Diagram showing the lap joint for circular columns with dimensions. The lap length is $\geq 50 \text{ mm}$. The lap is centered over the reinforcement bars. The distance from the lap to the edge is $\geq 100 \text{ mm}$.</p>	
<p>Diagram showing the lap joint for circular columns with dimensions. The lap length is $\geq 50 \text{ mm}$. The lap is centered over the reinforcement bars. The distance from the lap to the edge is $\geq 100 \text{ mm}$.</p>	
LONGITUDES BÁSICAS DE ANCLAJE (ART. 49.5 CE-21)	
HORMIGÓN: HA-25 / ACERO: B-500S / CON ACCIONES DINÁMICAS	
<p>Diagram showing the lap joint for circular columns with dimensions. The lap length is $\geq 50 \text{ mm}$. The lap is centered over the reinforcement bars. The distance from the lap to the edge is $\geq 100 \text{ mm}$.</p>	
<p>Diagram showing the lap joint for circular columns with dimensions. The lap length is $\geq 50 \text{ mm}$. The lap is centered over the reinforcement bars. The distance from the lap to the edge is $\geq 100 \text{ mm}$.</p>	